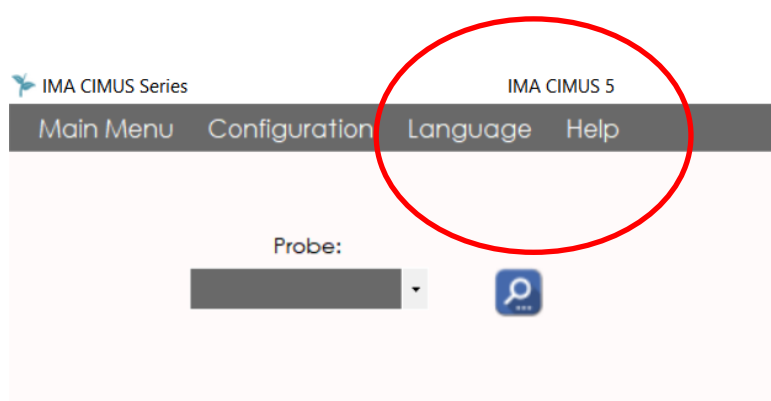
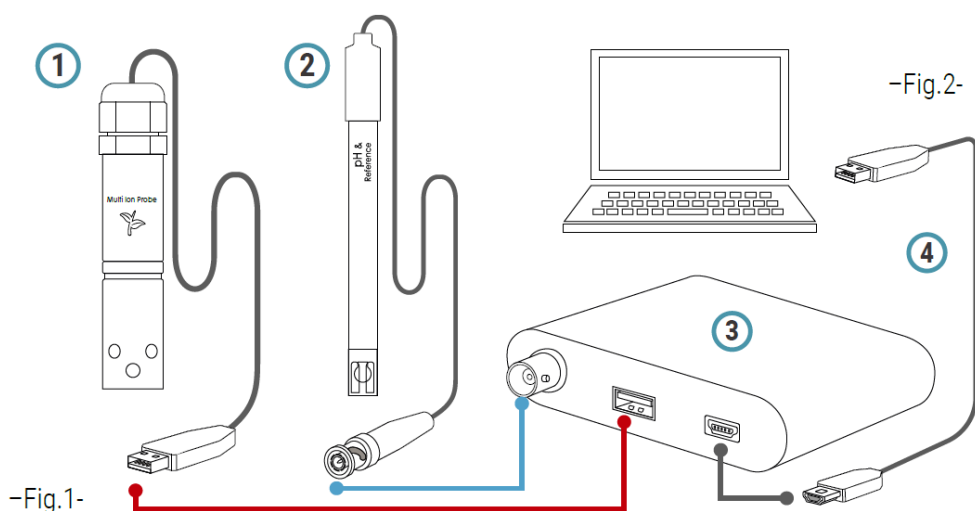


First installation

- 1.-Connect every sensor to its port. Connect the meter to your laptop or computer through an USB available port
- 2.- Run the software
- 3.- Please configure your new probe with your items. pH always at channel 5. Select none for none used channels.
- 4.-Check the window IMACIMUS 5 must be shown. If not redo the process by Main Menu, Configuration, Restore.



The 'Add probe' dialog box is shown, allowing configuration of the probe. It includes a 'Probe name' field and a 'Description' section. The 'Description' section has a table with the following data:

Description	
N Ions	5
Channel 1	none
Channel 2	none
Channel 3	none
Channel 4	none
Channel 5	pH

At the bottom of the dialog, there are 'Save Probe' and 'Close' buttons.