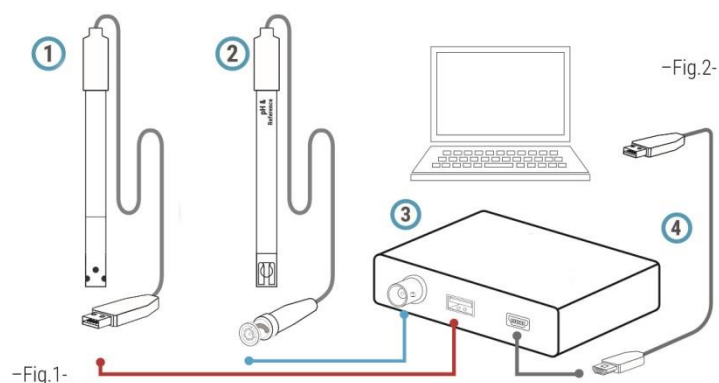


Single ION probe customization



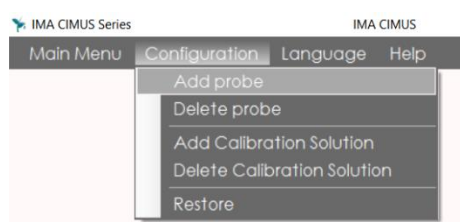
Single ION probe is an electrode's holder. Please read carefully the following instructions in order to assemble your own probe configuration.

Equipment installation

1. Connect Multi Ion and pH probe to the multichannel meter. –Fig.1–
2. Plug the meter to your Windows computer or tablet using the USB cable. –Fig.2–

1. Probe Configuration initial

Configure your Single ION probe in the software



1. Probe's name: e.g. pH&NO₂
2. N Ions : **8**
(it is mandatory due to your meter characteristics)
3. **Channel 2**: Select your ION ➡ e.g. **Nitrite**
4. Channel 8: always **pH**. *If you do not want to read pH you can select "none". BUT Remember that you must use pH simultaneously with Single ION probe in order to obtain measures.*
5. Channel 1-3-4-5-6-7 ➡ select NONE
6. Save probe

2. Standard Solution Configuration (initial)

Add your customized standards solution

Configuration ➡ Add Calibration Solution

- Give a name for the solution
- Select number of standards (minimum 2)
- Select the ion e.g. **Nitrite** *Introduce mg/L concentrations of each standards*
- Press Add Ion button
- Press Save solution button

3. How to insert electrode into Single ION probe (first use)



⚠ Assemble the electrode.
Don't touch/hit the electrode tip.



1. CONDITION STAGE (only Single ION)

The Conditioning Stage must be performed before a calibration or daily.

Conditioning times:

- ➔ 1st time or + 15 days not using (condition at least 2-4h)
- ➔ Daily (30 min)

The conditioning solution for a Single ion probe is a 1000 mg/L* of the primary ION.

* If target measurement is less than 10mg/L then a second conditioning of 10mg/L is recommend.

pH IS ALWAYS stored ON CONDITIONING SOLUTION

2. PLUG/CONFIGURE -PROBES/METER

Single ION Probe, using the USB available in the meter.

pH Electrode, make a 90 degree turn

3. PLUG METER TO COMPUTER/LAPTOP

Plug the mini usb to the meter, and the USB to an available port from your computer/laptop or tablet Windows,

4. pH calibration

Select "pH" on calibration solution in the Calibration menu. Follow the instructions on the Software

5. SINGLE ION PROBE calibration

Select "your solution" Standard solution in the menu

Use **both probes (Single ION and pH probe)** to perform the calibration

6. SINGLE ION PROBE and pH measurement

Use both probes (Single ION and pH probe) to perform the measurement

7. STORE

Always kept in the protective red rubber cap(Single ION Probe). The Electrode must be dry-stored, below 20°C. Proceed to left become dry carefully the inside of the Single ION probe using a tissue paper, without touching the tip surface from the electorde.